

Heavenly Father, in our Centenary year we rededicate ourselves and our Diocese to you. Send the Holy Spirit to give us confidence in our witness, generosity in our service, and love for our neighbours, that your Church may be renewed and many come home to you, through your Son our Saviour Jesus Christ. **Amen**

## Raise funds for us for FREE

with easyfundraising



Join as our supporter today at:  
[www.easyfundraising.org.uk/support-a-good-cause](http://www.easyfundraising.org.uk/support-a-good-cause)  
 Just search for:  
 St Mary Magdalene Church Clitheroe

8,000+ retailers will donate to us whenever you shop with them



Plus, you'll get...



Over **£60m** raised for UK good causes | **£0** extra cost to anyone



# BIBLE STUDY

ENCOUNTERS WITH CHRIST  
 In St. Luke's Gospel

**Mondays at 7:00pm**

(In the Choir vestry)  
**Starting on 11<sup>th</sup> May 2026**

**All Welcome. All Materials provided.**

To register interest please Email: [admin@stmaryclitheroe.com](mailto:admin@stmaryclitheroe.com)

# Octavius in June

A Summer Concert by



**Saturday 13<sup>th</sup> of June**

**3:00pm**

Trinity Methodist Church, Wesleyan Row,  
 Parson Ln, Clitheroe - BB7 2JY

**Tickets:** Adults: £8.00 U16s: £4  
 Refreshments Included

Tickets can be purchased on the door or online. To purchase online please scan the QR Code:

For any enquiries contact Gill on  
 07971881576



**Octavius Choir and Grange Band** are delighted to invite you along to an afternoon concert this June. Come along and listen to our selection of traditional folk songs and modern music alongside a talented brass band performing works such as Bring Me Sunshine and First Parade

## ST PETER'S CHURCH SALESBURY

# The Swing City Big Band

An evening of big band swing performed by the fantastic, 20 piece Swing City Big Band. A group of talented musicians & guests, bringing its special mix of big band and special favourites. This high calibre big band is in huge demand across Yorkshire, Lancashire and beyond! Grab your tickets to what promises to be an exciting evening of classic swing and jazz entertainment.

VENUE: ST PETER'S CHURCH, RIBCHESTER ROAD, SALESBURY  
 SATURDAY 13TH JUNE 2026, 7.00PM START.

**£12.50 PER PERSON. ADMISSION BY TICKET ONLY  
 INCLUDES REFRESHMENTS.**

Please contact **Elaine J Wray** for tickets on 0745 040 4414 (preferably text or Whatsapp) or email: [elainewray@hotmail.co.uk](mailto:elainewray@hotmail.co.uk)

# OPEN GARDENS WEEKEND

Spectacular Gardenscapes in the Ribbles Valley



**Saturday 20th & Sunday 21st June**

**11:00am - 5:00pm**

**Grindleton • Sawley • Bolton-by-Bowland  
 • Gisburn**

**£7.50 per person • Children Free**  
 Maps Available in Each Village



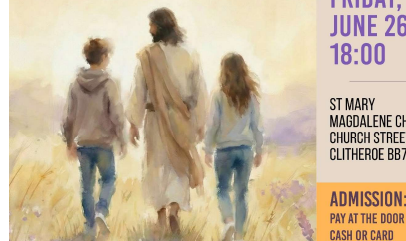
**A Lovely Day Out for All Ages!**

**Grindleton • Sawley • Bolton-by-Bowland • Gisburn**

THE HERITAGE YOUTH CHORUS PRESENTS

# WALK WITH ME

AN UPLIFTING MUSIC PROGRAM ABOUT  
 FOLLOWING JESUS CHRIST



FUNDRAISING CONCERT

FOR ST LEONARD'S CHURCH,  
 DOWNHAM, & ST MARY  
 MAGDALENE CHURCH, CLITHEROE

**FRIDAY,  
 JUNE 26  
 18:00**

ST MARY  
 MAGDALENE CHURCH,  
 CHURCH STREET,  
 CLITHEROE BB7 2DD

**ADMISSION: £10**  
 PAY AT THE DOOR  
 CASH OR CARD

The Heritage Youth Chorus is a faith-centred choir based in Utah, United States, composed of talented young singers who share a love of uplifting, Christ-centred music. The choir has performed with prominent artists—including Adonis, David Archuleta, Jerry O'Connell, Blake Shelton, and Matty MacLeod—and appears regularly at Temple Square in Salt Lake City. Since 2009, the choir has participated in annual service and performance tours, sharing inspirational musical programs with congregations and communities. This year marks a special milestone as the choir embarks on its first international tour. The singers are especially honored to bring their music to England, Scotland, and Wales—lands rich in spiritual heritage for members of the Church of Jesus Christ of Latter-day Saints.



## Live at the Castle

Clitheroe's free Music and Arts Festival is on Saturday 27<sup>th</sup> June. We have a main stage programmed with a mixture of Christian and local artists including artists from The Message and Becky Higg, a Christian folk singer.

We also have Arts & Craft and DJ workshops, a World Cup Football, food trucks, a Bowland Brewery bar, and even a Festival Salon. We'll have the usual inflatables, wonderful kids crafts and activities and the Chapel, with prayer activities throughout the day.

## Church at the Castle

On Sunday 28<sup>th</sup> June, we're planning a massive outdoor worship service!

We'll be worshipping together, followed by our free barbecue, and kids activities will continue.

This is a wonderful opportunity to really demonstrate the wonderful Christian unity that we see in Clitheroe, so all churches are encouraged to bring the whole congregation to the Castle Field on the Sunday morning

**Volunteers will be needed - more info to come!**